

3.8T MAEDA MC405 CRANE



SECOND STAGE EXTENDED 4.735M – 7.695M BOOM LENGTH

Working radius	m	up to 2.7	3.5	4.0	5.0	6.0	7.0	7.25	
Outrigger	Max-extended	kg	3,830	3,030	2,580	2,030	1,680	1,380	1,330
	Mid-extended	kg	3,830	3,030	2,580	1,880	1,430	1,160	1,120
	Min-extended	kg	3,830	3,030	2,580	1,650	1,180	930	780

THIRD STAGE EXTENDED 7.695M – 10.655M BOOM LENGTH

Working radius	m	up to 3.5	4.0	5.0	6.0	7.0	8.0	9.0	10.2	
Outrigger	Max-extended	kg	3,030	2,580	2,030	1,680	1,380	1,130	880	580
	Mid-extended	kg	3,030	2,580	1,880	1,430	1,130	880	740	490
	Min-extended	kg	3,030	2,580	1,680	1,180	880	730	580	400

FOURTH STAGE EXTENDED 10.655M – 13.565M BOOM LENGTH

Working radius	m	up to 4.0	4.5	5.0	6.0	7.0	8.0	9.0	10.0	11.0	12.0	13.1	
Outrigger	Max-extended	kg	2,230	1,930	1,730	1,400	1,180	1,030	930	830	690	530	430
	Mid-extended	kg	2,230	1,830	1,630	1,330	1,080	880	730	530	480	430	330
	Min-extended	kg	2,230	1,830	1,630	1,180	830	680	550	430	380	350	310

FIFTH STAGE EXTENDED 13.565M – 16.475M BOOM LENGTH

Working radius	m	up to 5.0	5.5	6.0	7.0	8.0	9.0	10.0	11.0	12.0	13.0	14.0	15.0	16.0	
Outrigger	Max-extended	kg	1,130	980	910	760	650	600	550	490	440	380	320	260	210
	Mid-extended	kg	1,130	980	910	730	630	550	480	430	380	330	280	220	180
	Min-extended	kg	1,130	980	880	730	530	450	420	370	330	280	240	190	150

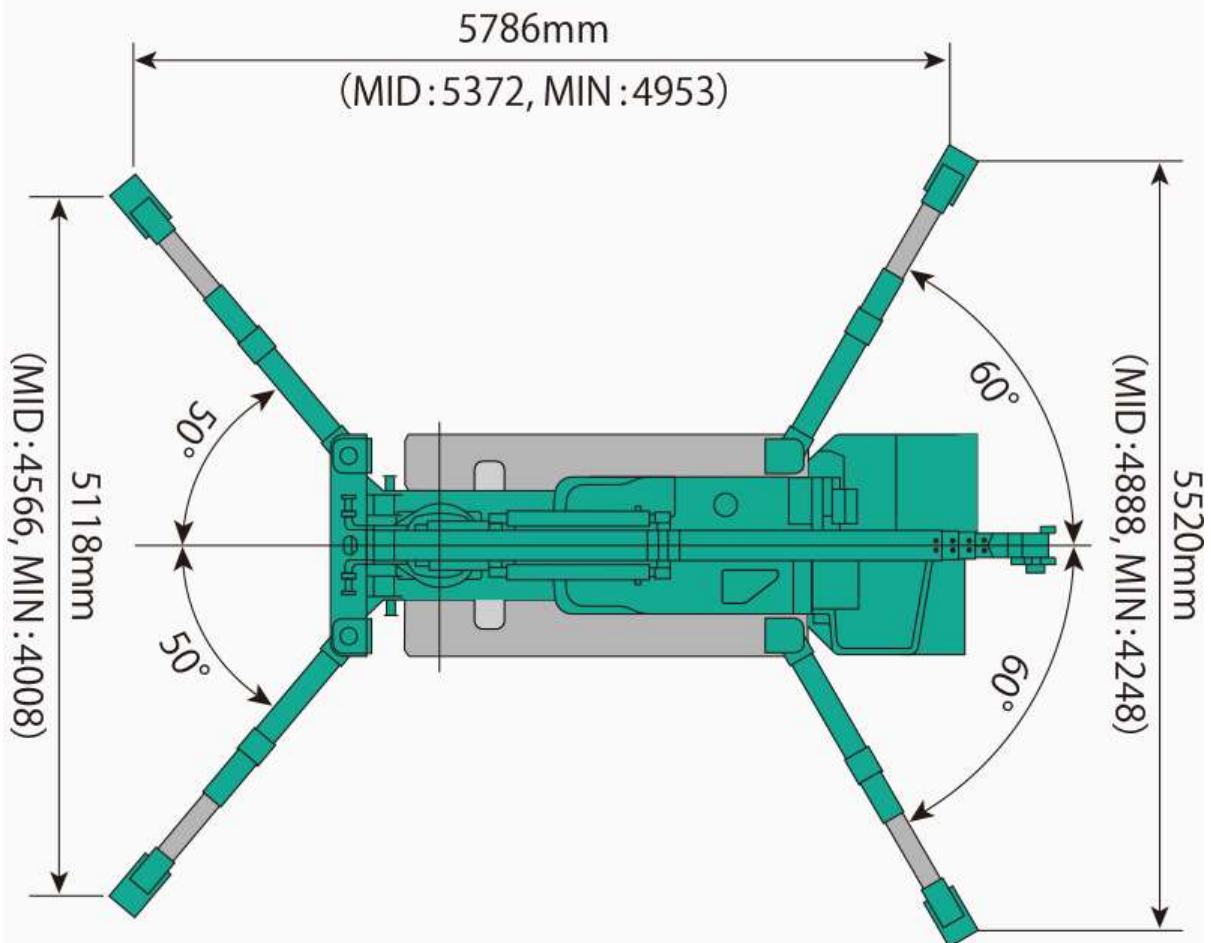
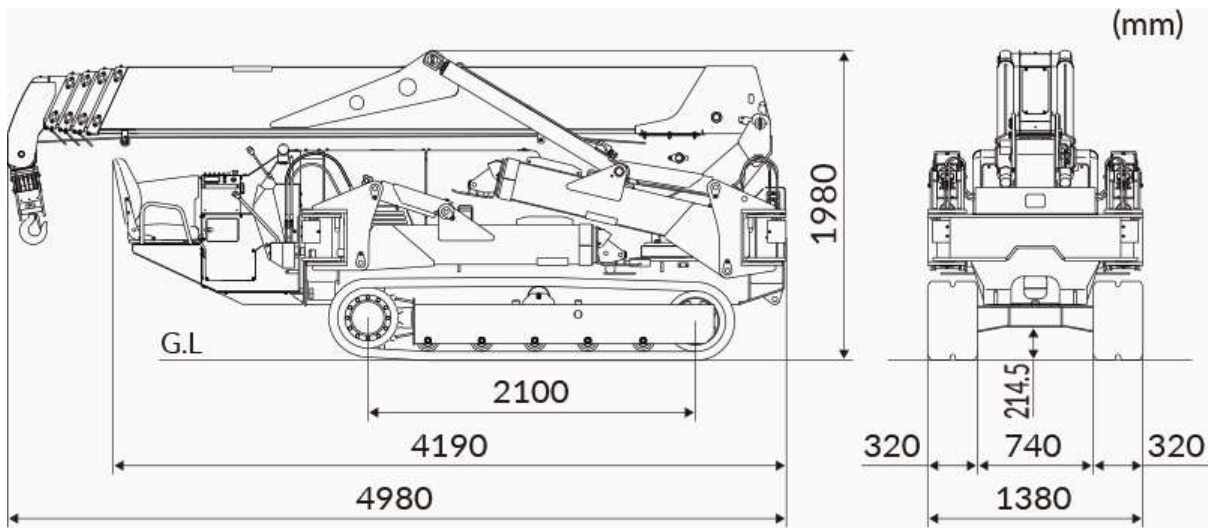
The Total Rated Load Charts are based on the actual working radius including boom deflection. The weight of the hook (standard 4 fall - 30kg) must be included as part of the load shown in the Total Rated Load Charts.

When using two fall or single fall hooks, use the appropriate four fall Total Rated Load Chart above but with a maximum load of:

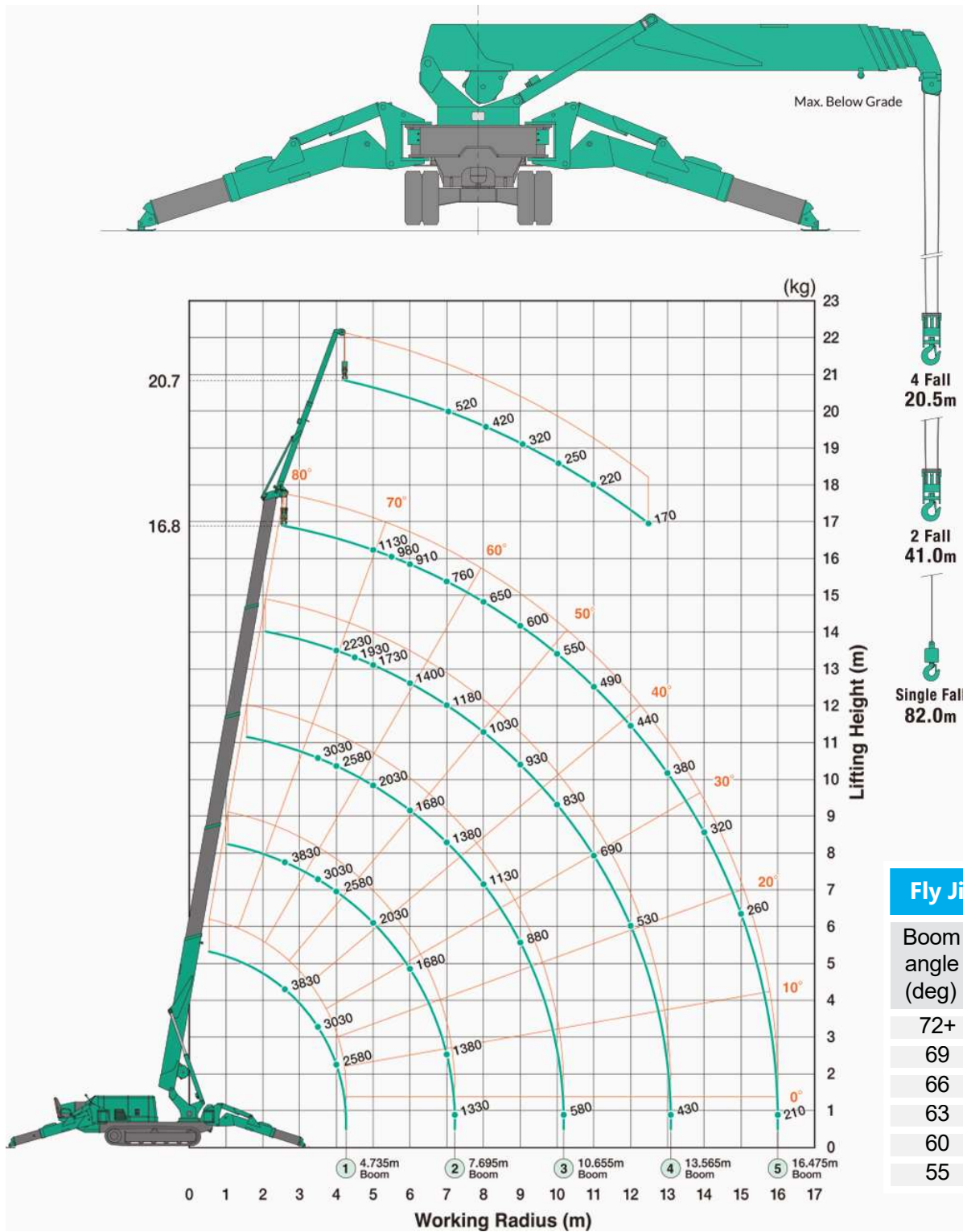
Two Fall - 1930kg,

Single Fall - 970kg.

DIMENSIONS & OUTRIGGER SPREAD



WORKING RANGE



SPECIFICATIONS

Specification		
Model	MC405CRM	
Crane capacity	3.83t x 2.7m	
Max. working radius	16m	
Max. lifting height	16.8m	
Hook speed	10m / min. (18.0m / min.) (4 falls, 4th layer)	
Single line speed	40m / min. (72.0m / min.) (4th layer)	
Hoist rope	IWRC 6 x WS(26) 8mm x 95m	
Telescopic system	Boom length Telescoping speed Boom type	4.735m - 16.475m 11.7m / 54.2 sec (41.3sec) Fully automatic 5 section pentagonal telescopic boom
Boom hoist system	Hoist angle / speed	0° - 80° / 24.5 sec (17.0 sec)
Slew system	Slew angle / speed	360° / 2.5 rpm (2.1 rpm)
Outrigger system	Type	Extension and set up by direct acting hydraulic cylinders
	Maximum extended dimensions	(length) 5786mm x (front) 5118mm x (rear) 5520mm
Traction system	Drive Travel speed Gradeability Crawler length x width Ground pressure	Hydraulic motor driven, stepless speed changer 0 - 3.3 km/h 20° 2100mm x 320mm 49.0 (0.50) kpa (kgf/cm ²)
Engine	Model Type Rated output Starting method Fuel / Fuel tank capacity	Yanmar 3TNV88-PMB 3-cylinder water cooled diesel 21.8kw/2400min-1 (29.6PS/2400rpm) Electric Diesel/60L
Remote control system	Type	Cable remote controller, micro-speed mode, load display for transmitter, outrigger operation
Dimensions	Length x Width x Height Weight MC405CRM	4980mm x 1380mm 1980mm 5600kg
Standard equipment	Overwind protection, load indicator, hydraulic safety valve, wire rope latch, level, machine body inclination alarm, EMO switch, travel lock lever, outrigger interlock device, moment limiter, rotary lamp, 4-fall / 2-fall / single hook block, 700kg searcher, 520kg fly jib, cable remote control.	